

# Winter Camp FAQ



Call of the Sea winter camp 2025...



## ***Where is winter camp located?***

Checking & pickup for campers is located in front of the Bay Model Visitor Center, near the picnic tables by the waterfront. Parking is available in the Bay Model's parking lot via Marinship Way.

Camp activities take place on the vessels, schooner Seaward and brigantine Matthew Turner, inside our classroom space, and the Bay Model.

## ***What are the camp hours?***

Camp is Monday to Friday from 8:30 am to 4 pm. Drop-off is at 8:30 am; no students will be supervised before this time. Please do not drop off your children without counselor supervision.

## ***How do I pay?***

50% of the fee is due at the time of registration. The full balance is due 30 days before camp starts. You may pay by card or check. To pay by card request a digital invoice. To pay by check, please make the check payable to Call of the Sea with the camp dates in the subject line, to: Call of the Sea 3020 Bridgeway #278, Sausalito, CA 94965.

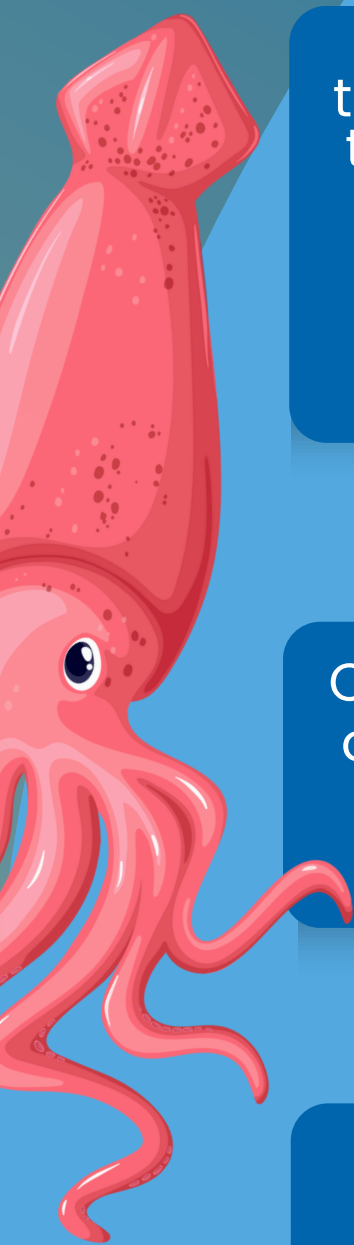
## ***What is included?***

All educational, craft materials, and safety equipment are included.

We will provide snacks and beverages for all participants. There will be no lunch offered for campers. Campers are expected to bring their own lunch each day of camp.

## ***What will my child learn?***

Your child will dive into the fascinating world of marine science and nautical exploration! They'll have hands-on experiences with exciting activities like kayaking, squid dissections, and line handling skills. Our activities are designed to spark curiosity, foster teamwork, and inspire environmental stewardship.



# Winter Camp FAQ



Call of the Sea winter camp 2025...



## ***Will weather effect camp?***

No! Rain or shine, we will have camp! However, outside conditions might interfere with the activities that we have planned.

## ***What should my child bring?***

- Small backpack or bag to carry belongings
- Reusable water bottle
- Hat or sunglasses
- Jacket, rain jacket, and sweaters (lots of layers!)
- Closed-toed shoes with secured backing
- Clothes that you know will get dirty and smelly
- A bagged lunch and snacks for each day
- Please label all your child's belongings with their name in the event that they get misplaced
- If your child has special medical needs such as medication, inhalers, and/or EpiPens, please email our team in advance ([education@callofthesea.org](mailto:education@callofthesea.org))



## ***Expectations & correspondence***

At camp, we expect all students to be curious, respectful, and engaged in activities. This includes:

- Being respectful to camp staff, fellow campers, and the environment.
- Participating actively in hands-on activities, outdoor adventure science experiments, and group discussions.
- Listening and following directions
- Taking care of camp materials and equipment
- Demonstrating environmental stewardship such as cleaning up after themselves and activities.

Above all, we encourage campers to have fun, ask questions, and develop a deeper connection to the ocean and the natural world!

Upon registration, you will receive a welcome message within one business day. Two weeks prior to the camp start date, you will receive an email containing important camp information. We will reach out with any updates through email.